

Solar Energy Solutions that Work for Your Business.

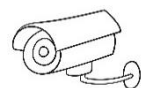
KING SOLARMAN.

24/7 Solar Wi-Fi Security Camera Trailer running over 60 days per Sun Charge with Android, iOS control & 30-60 days recording

Mechanical Specifications	
Rest Dimensions	50" (W) X 87" (L) X 134" (H)
Operation Dimensions	125" (W) X 123" (L) X 276" (H)
Mast Height	9.5' – 23'
Weight	1700 lbs – 3000 lbs
Mast Raise/Extension	Manually
Max Wind Rating Speed	70 kph
Trailer Details	
Axle	A/T single axle
Shipping Dimensions	50" (W) X 135" (L) X 134" (H)



LED Lighting Overnight



Security Camera 24/7



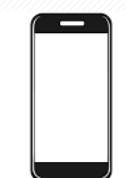
Police Light



Speaker



4G LTE Connected



Remote Control worldwide with mobile Devices



Video Streaming on Android, iOS and PC

Solar Technology Solutions

Install up to 6 cameras & 4 LED lights



King Solarman is the manufacturer of Solar Lighting Tower and Solar Security Camera Trailer in Fremont, and in Ontario California. Provides Solar Lighting Tower & Security Camera to Google, Apple, Tesla, Amazon, Turner Construction, US Army, NAVY, San Francisco AT&T Stadium, Oracle Arena, Levi's Stadium, Napa & Sonoma County Fire rescue work with PG&E, +50,000 musical events with FBI & local police compliance.

- Security Camera
- LED Lighting
- Quick Charge
- Police Light/Speaker
- Working Hours
- Timer
- Battery Backup



Northern California: 48949 Millmont Dr. Fremont, CA 94538; Southern California: 1261 S Grove Ave. Ontario, CA 91761
 TEL: 408-373-8800; 626-376-3393; Email: info@king-solarman.com
 www.king-solarman.com; www.SolarLightingTower.com



Northern California: 48949 Millmont Dr. Fremont, CA 94538
 Southern California: 1261 S Grove Ave. Ontario, CA 91761
 TEL: 408-373-8800; 626-376-3393
 Email: info@king-solarman.com
 www.king-solarman.com; www.SolarLightingTower.com



License Plate Capture Camera powered by Solar

License Plate Capture Distance	up to 40 m (131 ft)
Capture License Plates Number	up to Two (2) Lanes
Power Supply	PoE+ (IEEE802.3at Class 4)
Operating Environmental	-30° C to +60° C (-22° F to +140° F) Less than 95% RH
Dimensions	404.0 mm x 163.80 mm x 132.10 mm
Gross Weight	4.10 kg (9.04 lb)



Blue & Red Police Light



Up to 6 PTZ Cameras & 4 LED Lights

PTZ Auto Tracking Camera powered by Solar

Mechanical	Size: Φ160(mm) x 295(mm); Weight: 8.82lb
Effective Pixels	1920(H) x 1080(V), 2 Megapixels
Resolution	1080P(1920x1080)/720P(1280x720)
Pan/Tilt Range	Pan: 0° ~ 360° endless; Tilt: -15° ~ 90°, auto flip 180°
Day/Night	Auto (ICR) / Color / B/W
Power Supply	DC12V, PoE (802.3at)
Working Environment	-40°C ~ 70°C (-40°F ~ +158°F) / Less than 90% RH



Thermal Camera powered by Solar

Mechanical	Size: 291(L)x104(W)x97(H) [mm]; Weight: 1.37kg
Thermal Sensor	400 x 300 VOx Uncooled Thermal Sensor Technology
Thermal Features	Athermalized Lens, Focus-free, < 40 mK Thermal Sensitivity
Recognition Distance	Human: 361 ft; Vehicle: 1148 ft
Power Supply	24 VAC, 1 A; 12 VDC, 1 A; or PoE
Power Consumption	Maximum 10 W
Working Environment	-40 °C ~ +60 °C, Less than 95% RH



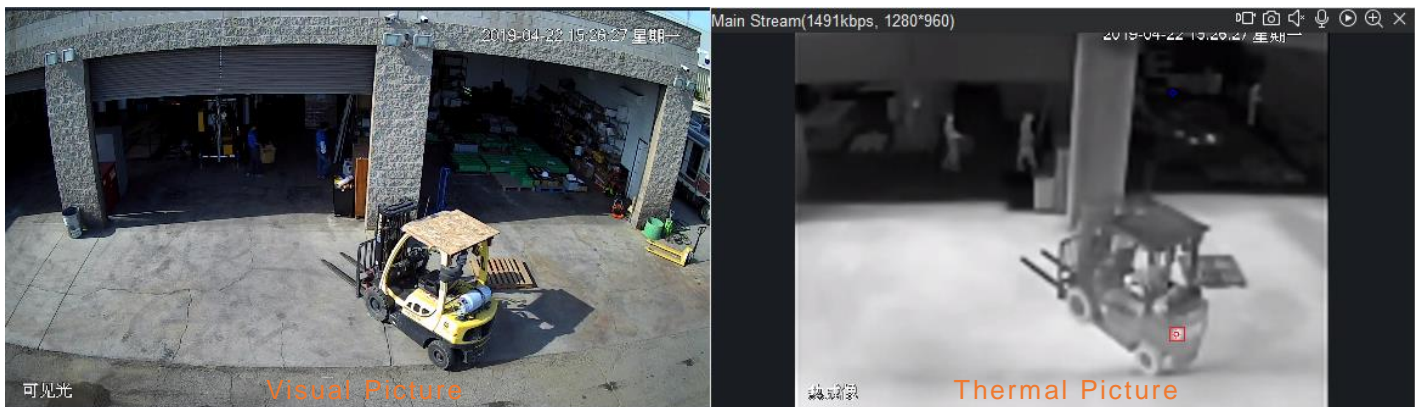
LED Lights (51,200 Lm) powered by Solar

Input Voltage	DC 42-58 V
Rated Power	4 X 80 W
Ambient	Temperature: -25 °C ~ +50 °C; Humidity: 10% ~ 90%
Lifetime (H)	> 50000H
Weight (kg)	4 X 3.2
Lumens	4 X 12,800 Lm
Light Distance & Coverage	20 Lux at dist. 12m



Fixed Long-Range Camera powered by Solar

Mechanical	Size: 191(L)x90(W)x82(H) [mm]; Weight: 0.65kg
Effective Pixels	2592(H)x1520(V), 4 Megapixels
Minimum Illumination	0.01Lux/F1.2(Color), 0.Lux/F1.2(IR on)
Day/Night	Auto (ICR)/Color/B/W
Power Supply	DC12V, PoE (802.3af)
Power Consumption	< 5W
Working Environment	-30C~+60C, Less than 95% RH



SunPower Solar Panel 1300 watt

Solar Panels Number	4
Panel Connection Type	Parallel / Series Connection
Controller	Maximum Power Point Tracking (MPPT)

Battery (X 4) charged by Solar & 110 VAC

Capacity	4 X 50 AH = 200 AH
Voltage	52.8 V
Battery Type	LFPO (Lithium-Iron-Phosphate Battery)
Mechanical	Size: 485(L) x 170(W) x 253(H) [mm]; Weight: 30.6 ± 0.5 kg
Temperature	Storage: 0 – 45 °C; Operation: -20 - +65 °C
Battery Life	2000 cycle
Over Charge Protection	Built-in control box, works when Voltage > 55 V
Over Discharge Protection	Built-in control box, Voltage between 44 V and 46 V.



- ✓ Rapid Deployment to all over the States
- ✓ No Diesel Required, 100% powered by Solar
- ✓ 24/7 video recording
- ✓ Live streaming video via 4G LTE
- ✓ iOS and Android APPs
- ✓ Jobsite Security & Cost Savings

